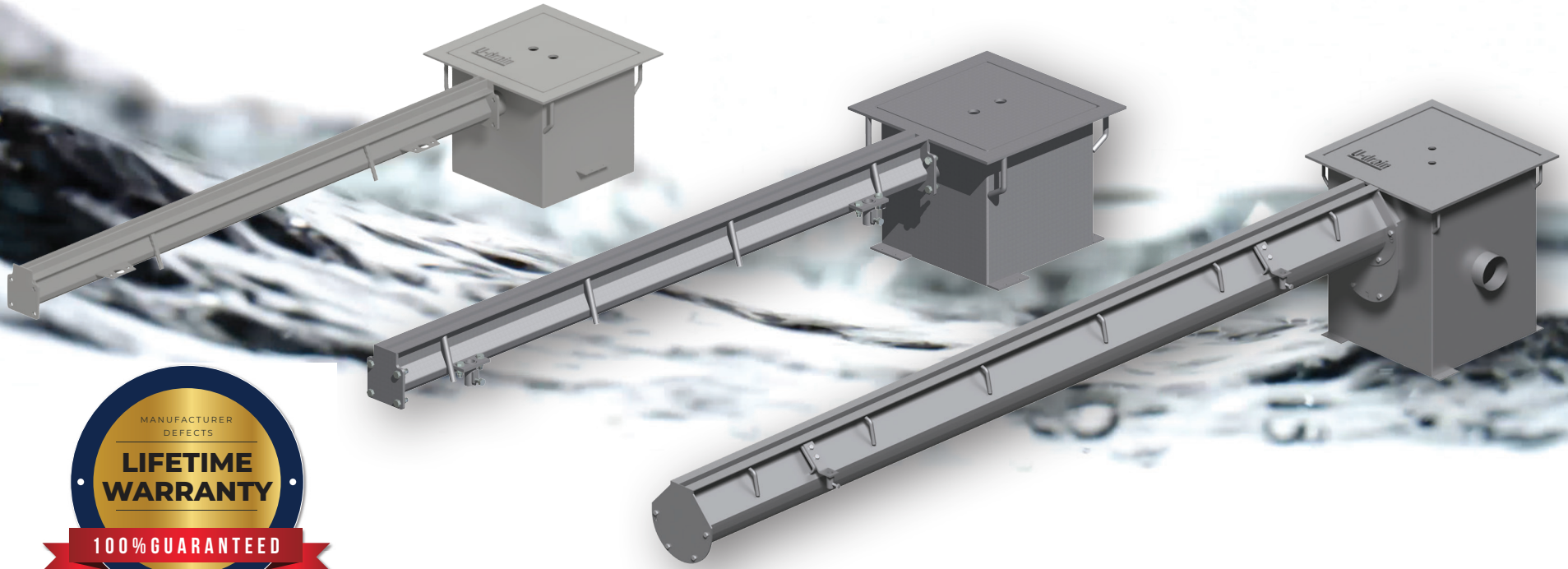




**LOW MAINTENANCE, EASY-TO-INSTALL**  
**LONG LASTING FLOOR DRAINS**



[www.u-drain.ca](http://www.u-drain.ca)

1.855.746.8200

[sales@u-drain.ca](mailto:sales@u-drain.ca)



# WHAT IS U-DRAIN™?

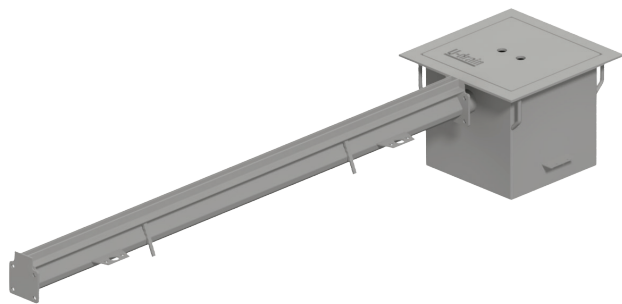
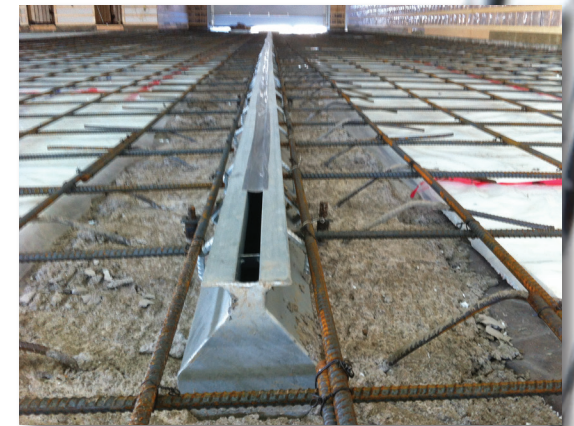
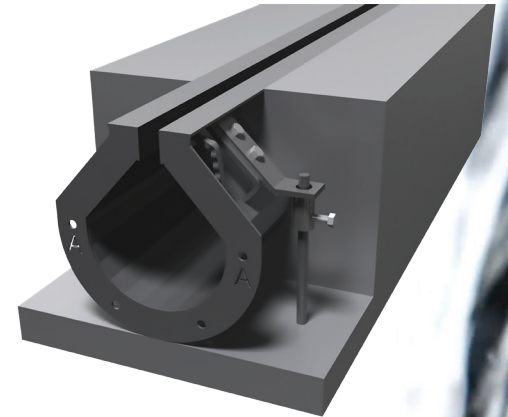
U-drain™ is a **SIMPLE, LOW MAINTENANCE, and COST-EFFECTIVE** solution for concrete floor drainage.

This **NON-GRATED, PRE-ENGINEERED SLOTTED TRENCH DRAIN** is installed into a concrete floor and designed to remove surface water through a single slot that opens into a trench which directs drainage to a connected sump.

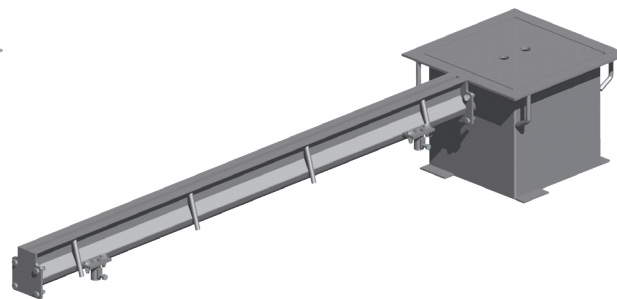
The basic U-drain™ system consists of pre-sloped and/or neutral sections, an adapter plate/ end cap and a sump. Each of the drain system's components are bolt-together to provide **USER-FRIENDLY ASSEMBLY AND INSTALLATION.**

**INSTALLED INTO A FLOOR GRID PRIOR TO CONCRETE BEING POURED,** the U-drain™ system connects directly to the rebar grid. The drain can be used as a centre screed when pouring concrete. Once the concrete has been poured, the narrow slot opening is level with the floor, creating an aesthetically pleasing, low-profile intake.

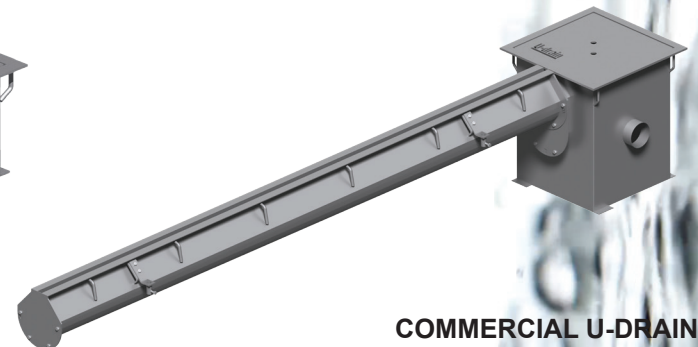
U-drain™ is available in three models: **LANDSCAPE, RESIDENTIAL AND COMMERCIAL.** Each model is fundamentally the same, but with unique features that allow for the drain to be used in a large variety of applications, ranging from home garages to aircraft hangars.



**LANDSCAPE U-DRAIN**



**RESIDENTIAL U-DRAIN**



**COMMERCIAL U-DRAIN**

# WHAT IS U-DRAIN™?



## DRAIN MATERIAL

U-drain™ is **AVAILABLE IN TWO MATERIALS: GALVANIZED and STAINLESS STEEL.** Galvanizing's Zinc coating provides excellent resistance to normal corrosion over time. For applications that deal with highly corrosive drainage and/or sanitary concerns where bacteria buildup must be prevented, Stainless Steel provides unmatched performance.

## DRAINAGE CAPACITY

U-drain™ is **ABLE TO HANDLE A LARGE VOLUME OF DRAINAGE WITH EASE.** Our Commercial U-drain™ comes in standard 10' sections that have a 1" wide slot. This gives each 10' section 120 square inches of intake. Commercial U-drain™ standard sections are sloped at .05% (a 1/2" over 10') which ensures proper drainage flow towards the sump pit.

Residential U-drain™ comes in 5' lengths and features a 1/2" wide slot. This gives each 5' section 30 square inches of intake. Residential U-drain™ sections are not pre-sloped as their intended application is in shorter drain runs.



## STRUCTURAL INTEGRITY

U-drain™ is designed in such a way that the weight load on top of the drain is channelled directly into the surrounding concrete. This design literally makes U-drain™ as strong as the concrete that is poured around it.

U-drain™ is **CSA TESTED and CERTIFIED IN BOTH CANADA AND THE UNITED STATES.** Our commercial and residential models in BOTH galvanized and stainless steel are CSA certified as Extra Heavy Duty (CSA B79-08) and Special Duty (ASME A112.6.3-2016). Special Duty is the highest ASME load class and requires the drain to have a safe live load of over 10,000lbs. This rating is safe for extremely heavy traffic including airport traffic.



## RESIDENTIAL U-DRAIN™

Residential U-drain is designed for small scale drainage applications ranging from home garages to driveways. Residential U-drain comes in standard 5' lengths. These sections are not pre-sloped due to most residential applications requiring less overall length for drainage to travel. A 5' section of Residential U-drain has 30 square inches of intake for a maximum capacity of 240 GPM.

The residential system features an ADA compliant 1/2" slot opening that is able to handle anything from snow melt to washing a car indoors. This slot acts as the intake for the drainage to enter the trench and make its way to the sump pit. The standard residential sump size is 12" x 12" x 12" with larger sizes and multiple inlet options available.



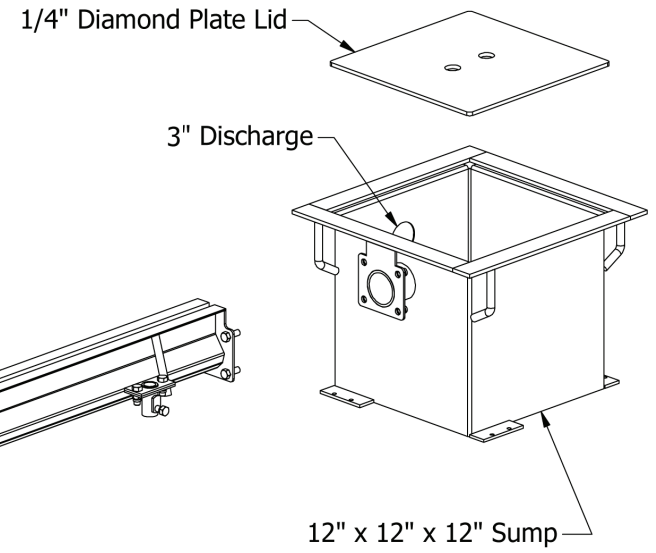
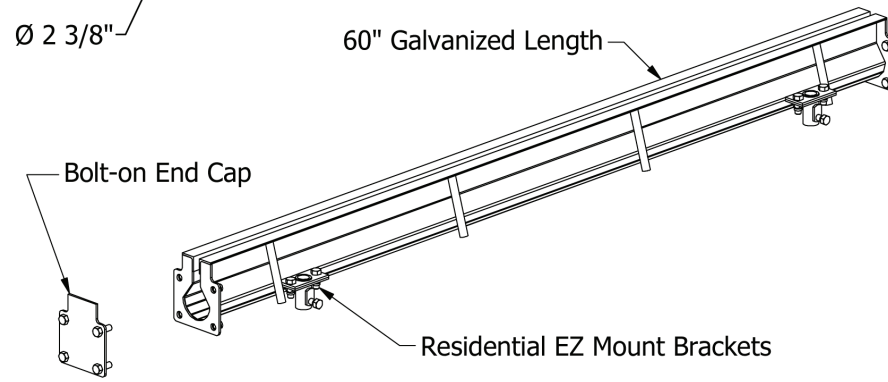
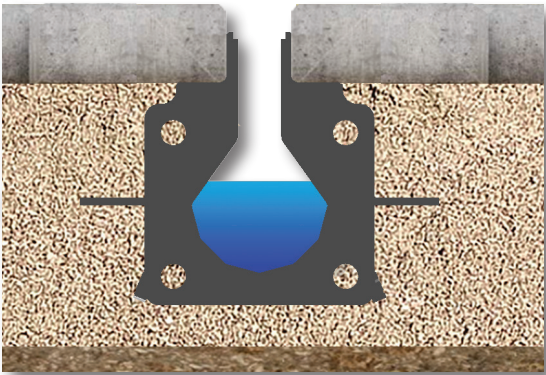
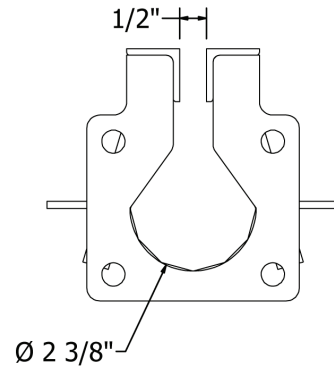
## LANDSCAPE U-DRAIN™

Landscape U-Drain is a pre-engineered slotted trench drain that offers a classy and low profile solution for directing water in a wide range of landscaping applications.

Landscape U-Drain is easy to install and can be cast in concrete or placed in packed gravel depending on the application. It is designed as a bolt-together system for do-it-yourself simplicity. With Landscape U-Drain, there are no grates to remove and clean, making it the perfect low-maintenance drainage option. Simply insert the provided cleaning paddle and drag it along the trench for easy cleanout.

U-Drain has a sleek look that provides a classy finish to your landscape with a low profile 1/2" slot opening that blends into the surface and is safe for foot traffic. Landscape U-Drain is available in both galvanized steel and stainless steel finishes. Both finishes ensure that U-Drain is built to last a lifetime in your landscape.

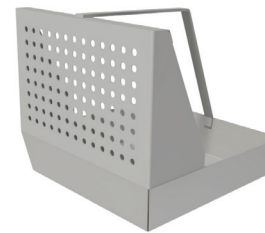




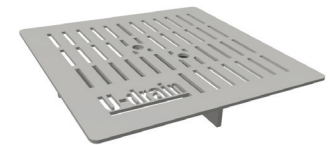
## OPTIONAL ACCESSORIES



**CATCH BASINS**



**SILT BASKETS**



**DECORATIVE LIDS**  
(Slotted, Plain or Checkerplate)

## COMMERCIAL U-DRAIN™

Commercial U-drain is designed for large scale drainage applications ranging from parkades to aircraft hangars. It is designed to meet and exceed HS-20 loading requirements, making it perfect for use in heavy traffic applications. Commercial U-drain comes in standard 10' lengths that are pre-sloped at a rate of .05% (1/2" over 10'). This slope allows for continuous flow over long distances and renders the drain self-cleaning. Unsloped 5', 3' and 1' sections are used for extending along short distances when needed. The drain system begins with an end section that slopes toward a sump pit, with sloped sections inserted to lengthen the drain as desired. 120' of continuous one way slope is available. With proper components, flow rates of over 950 GPM are attainable.

The Commercial U-drain system features a 1" slot opening. A wide variety of commercial sump pits and accessories are available, including silt strainers and oil separators.

## STAINLESS STEEL U-DRAIN™

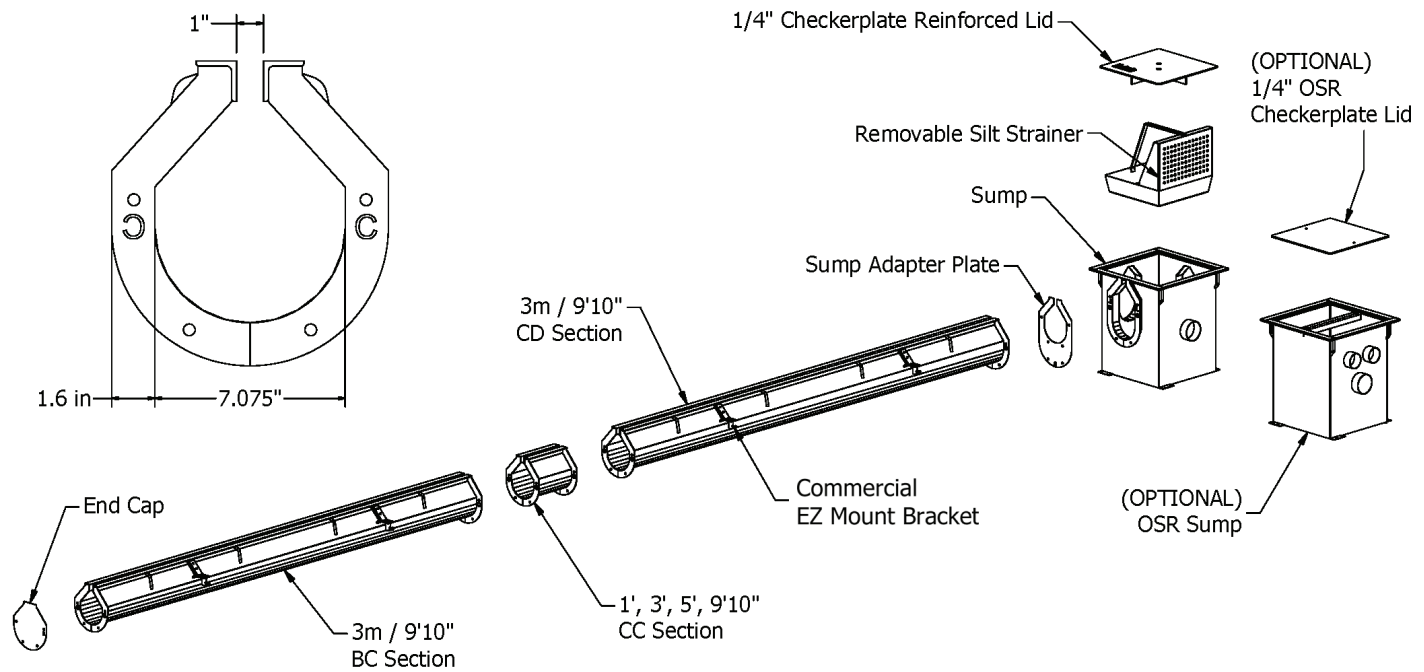
U-Drain stainless steel slot drain is the ultimate solution for maintaining a clean and food-safe environment. Designed specifically for commercial kitchens, food processing facilities, and other hygienic spaces, this innovative drainage system offers numerous benefits.

Crafted from high-quality stainless steel, it ensures exceptional durability, corrosion resistance, and easy maintenance. With its sleek and seamless design, stainless steel U-Drain seamlessly integrates into your floor, minimizing the risk of dirt and debris buildup. This not only enhances the aesthetic appeal of your space but also promotes efficient cleaning and eliminates potential breeding grounds for bacteria. The food-safe nature of stainless steel further guarantees that no harmful substances or residues will contaminate your food, ensuring the highest level of safety and hygiene for your facility.

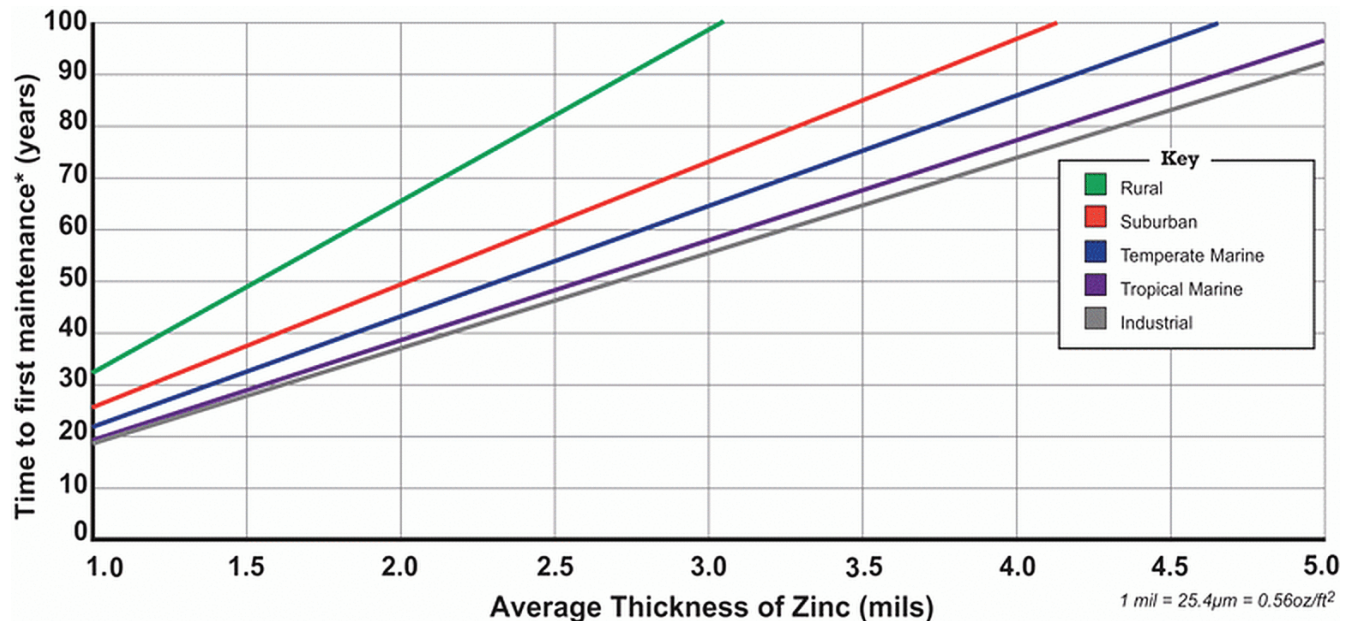
U-Drain meets all of the Canadian Food Inspection Agency (CFIA) and Safe Quality Food Institute (SQFI) requirements for food handling and processing facilities.

Residential, Landscape and Commercial U-Drain are all available in stainless steel.





## U-DRAIN™ GALVENIZED LIFESPAN BY CLIMATE (3.9 MIL ACTUAL THICKNESS)



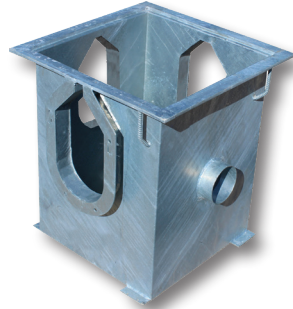
\*Time to first maintenance\* is defined as the time to 5% rusting of the steel surface.

# U-DRAIN™ OPTIONS/ACCESSORIES

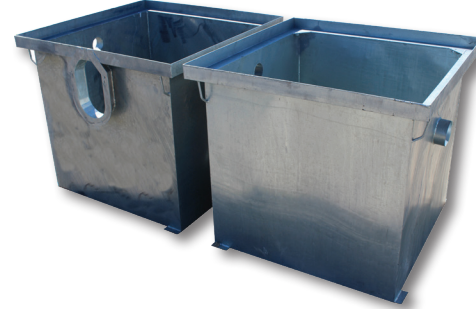
There are a variety of optional components available for your U-drain system including a wide range of sump pits with various sizing and intake options (single, double and triple inlet models available); oil separator sump units; checkerplate, grated or slotted lids, clean out and drain accessories and more.



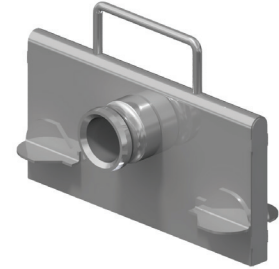
**Residential Sump**  
Available in 12x12x12



**Commercial Sump Available in:**  
18x18x24  
24x24x24  
36x36x36



**Oil Separator Sump**  
18", 24" and 36" Models



**Direct Drain Insert**

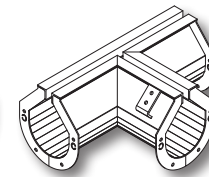
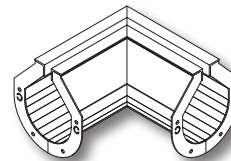
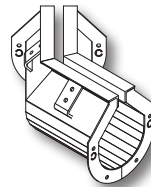


**Residential or Commercial Silt Strainer**



**Flush Nozzle**

**OPTIONS INCLUDE: 45°, 90° and T-Sections**



**Cleaning Paddle**  
(Residential & Commercial)



MANUFACTURED BY:



TECHNICAL FILES



[www.u-drain.ca](http://www.u-drain.ca)

[www.u-drain.ca](http://www.u-drain.ca) | 1.855.746.8200 | [sales@u-drain.ca](mailto:sales@u-drain.ca)

Illustrations, photographs and specifications in this brochure are based on the latest information at the time of publication. Design and specification of products is subject to change without notice, please contact your local dealer for product information and availability.

©2024 Norstar Industries Ltd.